

Start Your Engines! Fueling Knowledge to Accelerate Outcomes and Drive Performance for Improved Diagnosis and Management of COPD

National Jewish Health, Denver, Colorado



The Problem

- COPD is the 3rd leading cause of death worldwide and 4th leading cause of death in the U.S.
- Costs attributable to COPD in the US are projected to reach 49 billion by 2020.
- It is estimated that 16 million adults have COPD in the U.S.

Practice Gaps

Clinicians have demonstrated the following gaps:

- Applying clinical practice guidelines
- Diagnosing COPD and assessing severity
- Selecting appropriate treatment options
- Managing disease to reduce exacerbations
- Improving patient adherence and self-management
- Educating patients on proper inhaler technique

"It is critical that clinicians stay current on new COPD guidelines and best practices in diagnosis, management and treatment to ensure the best possible care for COPD patients."

— Barry J. Make, MD
Professor, Department of Medicine
National Jewish Health

Educational Solutions


As the leading respiratory hospital in the country, National Jewish Health is passionate about narrowing these practice gaps. As a result of the generous support provided by AstraZeneca, five educational initiatives have been offered over since 2016:

	COPD Care in Your Practice 2 Interactive evening workshops
	Applying Evidence-Based Guidelines and Advances in Treatment to Improve Outcomes in Patients with COPD (Jointly Provided with PeerView Institute for Medical Education) 11 live InClinic meetings On demand online module
	Patient GPS: Paths in the Management of Patients with COPD (Jointly Provided with Catamount Medical Education) 4 Live meetings Online enduring module
	COPD Now: Medical Management of Stable Disease and Exacerbations 8 Live meetings 4 Online enduring modules
	Capturing COPD: A Team Approach to Diagnosis, Management and Treatment 32 Live team trainings 5 Online enduring modules

2015
COPD Care in Your Practice

2017
PatientGPS™: Paths in the Management of Patients with COPD

2018
Capturing COPD: A Team Approach to Diagnosis, Management and Treatment



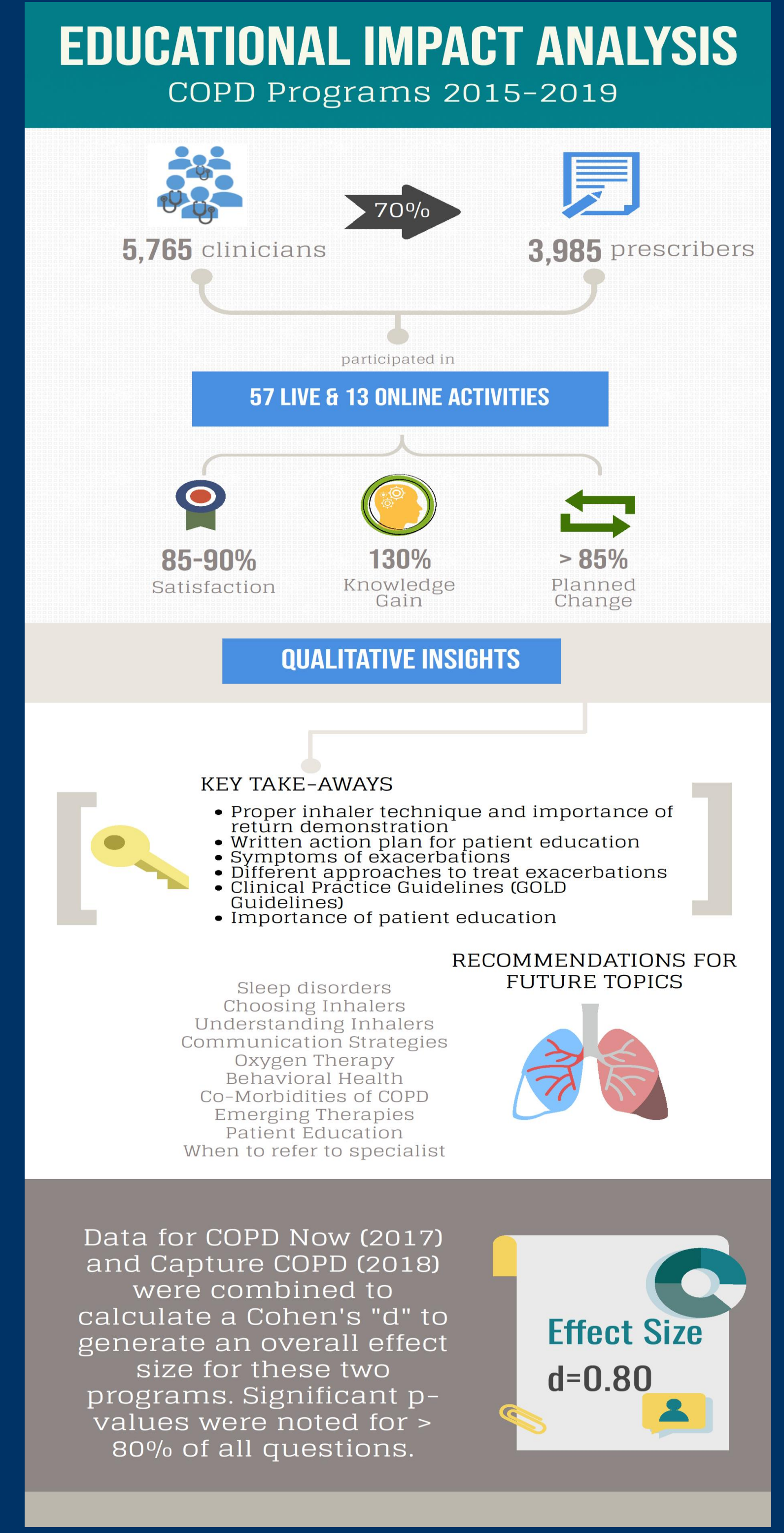
2016
Applying Evidence-Based Guidelines and Advances in Treatment to Improve Outcomes in Patients with COPD

2017
COPD Now: Medical Management of Stable Disease and Exacerbations

COPD education provided by National Jewish Health has impacted an estimated 1 million patient lives.

Impact Analysis

A meta-analysis of all five initiatives was conducted. Two of the five initiatives had data conducive to effect size calculations. In addition, levels of significance were calculated for all questions for the two most recent activities.



Improving Population Health

As a key component of the educational arm of the CAPTURE Study, we will continue to explore direct correlations between COPD CAPTURE education and population health metrics for Level 7 outcomes.



CAPTURE STUDY

- 5-year, NIH funded study aimed to train clinical teams for improved diagnosis and treatment of COPD and test the sensitivity and specificity of the CAPTURE tool
- 110 clinics to receive COPD 101 live training (36 completed to date)
 - Randomized to treatment vs. control group
- 4 parallel online modules support a deeper dive into the management of COPD. These modules are currently available for study participants and the public.

